

# THE **Salvador Dalí** COLLECTORS QUARTERLY<sup>®</sup>

**FOR THE DALI AFICIONADO AND SERIOUS COLLECTOR**

\*\*\*Now in Our 19<sup>th</sup> Year\*\*\*

## **U.S. Theatrical Release of Dalí Pic *Little Ashes* Slated for May 8**

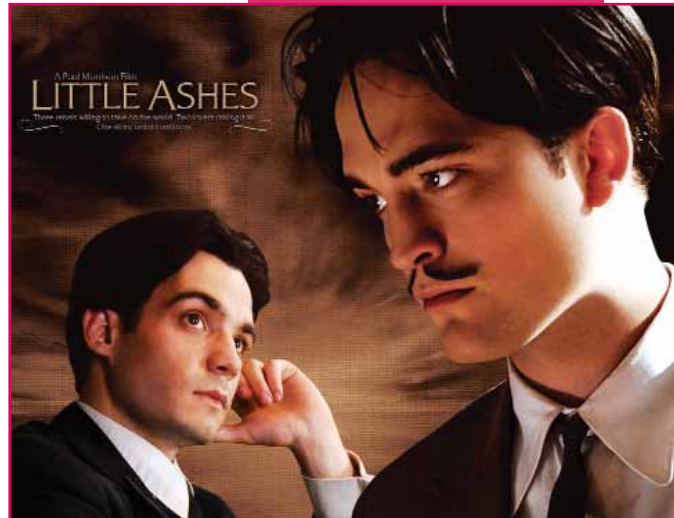
**R**egent Releasing has shifted the U. S. limited theatrical release date of *Little Ashes*, featuring *Twilight* star Robert Pattinson as Salvador Dalí, from March 27 to May 8, 2009. *Little Ashes* would have gone into theaters head-to-head against *Adventureland*, starring another *Twilight* star Kristen Stewart, and *Monsters vs. Aliens*, a Paramount Pictures animation voiced by Reese Witherspoon and others. But by pushing back release of *Little Ashes* to May 8, it is yet to have any serious competition.

*Little Ashes* had its U.K. premiere in London this past October 7 - 8 at the 2008 Raindance Film Festival. It is currently scheduled to open the 9th Jameson Belfast Film Festival at Movie House, Dublin Road in Belfast on March 26, 2009.

### **Raindance Film Festival Review of *Little Ashes*...**

Paul Morrison's latest feature since 2003's *Wondrous Oblivion*, provides us with a fascinating account of three of the leading artists of their time; Salvador Dalí, Luis Buñuel and García Lorca. *Little Ashes* follows a young Salvador Dalí from his beginnings living in the Residencia de Estudiantes, leading to his dynamic relationship with poet Federico Lorca and their increasing infatuation with each other. The shots of the picturesque landscapes of Spain alone makes *Little Ashes* an unmissable spectacle.

Set across a timeframe that spans the roots of fascism to the beginning of General Franco's dictatorship, *Little Ashes* depicts love in a time where homosexuality was deemed immoral-- a point particularly reinforced by Matthew McNulty's portrayal of surrealist filmmaker Luis Buñuel, a man notorious for his contempt regarding the matter.



Javier Beltrán and Robert Pattinson as Lorca and Dalí in *Little Ashes*.



...Early Dalí painting *Cenicitas* (*Little Cinders* or *Little Ashes*) oil on canvas 1927-28

(continued on pg. 2)

### **INSIDE**

***The Other Dalí Movies?***

PAGE 3

***Dalí Museum Breaks Ground***

PAGE 3

***Achtung! Dalí Takes Berlin***

PAGE 5

***Dalí Chess Set In Motown***


PAGE 6

***Events & Exhibitions***

PAGE 7

## **Little Ashes** (continued from p. 1)

While it is a far cry from his role in the Harry Potter franchise, Robert Pattinson brings Dalí to the screen with precisely the irreverent and eccentric personality you would expect from one of the creators of Spain's avant-garde movement. It is however newcomer Javier Beltran who steals the show as García Lorca whose pain and longing is thoroughly portrayed and always felt, but never overplayed.

The interpretation of the long rumoured relationship between Dali and Lorca has already caused controversy among historians, with Dali having previously claimed to have rejected Lorca's advances. *Little Ashes* was shot for £1.4 million in budget principally in Barcelona, and raises discussion as to the nature of the relationships the three men formed. Run time: 107 minutes. 



*Matthew McNulty as Buñuel*

### **Credits & Cast...**

Directed by Paul Morrison  
Written by Philippa Goslett

Salvador Dalí...Robert Pattinson  
Federico Garcia Lorca...Javier Beltrán  
Luis Buñuel...Matthew McNulty  
Gala...Arly Jover

### **Opening May 8 at...**

- Laemmle Sunset 5, 8000 Sunset Blvd., West Hollywood, CA
- Monica 4-Plex, 1332 2nd St., Santa Monica, CA
- Laemmle's Playhouse 7, 673 E. Colorado Blvd., Pasadena, CA
- Lumiere Theater, 1572 California St. San Francisco, CA
- Landmark Sunshine Cinema, 143 E. Houston St., New York, NY

### **Opening June 5 & 26 respectively at...**

- Landmark Ken Cinema, 4061 Adams Ave., San Diego, CA
- Ritz at the Bourse, 400 Ranstead St., Philadelphia, PA


## **Synopsis of Little Ashes**

**Excerpted from the official website of the movie - [www.LittleAshes-TheMovie.com](http://www.LittleAshes-TheMovie.com)**

**M**adrid, 1922: a city on the edge of change, as traditional values are challenged by the dangerous new influences of jazz, Freud and the avant-garde. Salvador Dalí arrives at university at age 18, determined to be a great artist. His bizarre blend of shyness and rampant exhibitionism attracts the attention of two of the university's social elite - Federico García Lorca and Luis Buñuel.

Salvador is absorbed into their decadent group and for a time he, Luis and Federico become a formidable trio, the most ultra-modern group in Madrid. However, as time passes, Salvador feels an increasingly strong pull toward the charismatic Federico - who is oblivious to the attention he is getting from his beautiful writer friend, Magdalena. Finally, in the face of his friends' preoccupations - and Federico's growing renown as a poet - Luis sets off for Paris in search of his own artistic success.

Alone in Madrid, Federico struggles against his psyche, tortured by the damning implications of his own religious beliefs and the undeniable voice of his flesh. He is haunted by news of Salvador, who is collaborating on a Surrealist film with Luis and has embarked on an affair with Gala, a married woman.

By 1936 Spain is teetering on the precipice of civil war, and Federico, now a highly acclaimed and controversial playwright, receives an invitation to dinner from Salvador and Gala. But the hosts have a rather unusual agenda and the evening is a disaster. A week later, Salvador is hosting a party when he discovers that Federico has been assassinated in the outbreak of war. The walls of self-denial that surround the artist come crashing down as he realizes, too late, the depth of his love for Federico. 



*Arly Jover as Gala*

*"He is really mad!  
For as long as I could  
remember I had  
savored that phrase  
with delight.."*



**THE**  
**Salvador Dalí**  
COLLECTORS QUARTERLY.

VOL 19 NO 1  
Spring 2009

**2**

**Read more about Little Ashes at the Regent Releasing Website...**  
**[http://RegentReleasing.com/coming.html#little\\_ashes](http://RegentReleasing.com/coming.html#little_ashes)**



# Dali Movies Still “In Development”

By E. J. Campfield, editor, *The SDCQ*

With *Little Ashes* anchoring the youthful Dali bio-pic slot, is there any possibility that another Dali movie exploring his mature years could yet get made? Here’s an update on other Dali projects that might just have enough heat and star power to make it onto the screen.



Banderas



Zeta-Jones

Front runner to date seems to be Media 8 Entertainment’s *Dali*, which has signed Simon West (*Tomb Raider*) as director. Antonio Banderas is attached to play the title role opposite Catherine Zeta-Jones as Dali’s sexually charged wife Gala -- reprising the duo’s remarkable chemistry from *The Mask of Zorro* (1998).

The provocative casting seems to have done the trick for Media 8, which recently landed enough funding to get the picture green-lighted and into production. A February 9 *Hollywood Reporter* story broke the news that Media 8 had inked several major sales deals for its projects, including *Dali*, which was sold to RCV (Benelux), Lusomundo (Portugal), Gulf (Middle East) and Village (Greece). Spanish distributor Arcadia has picked up the rights for Spain and Latin America. A very savvy deal all the way around -- *Dali* now has the markings of a major motion picture as compared to a little art house production like *Little Ashes*.


*Dali* explores how the painter captured the attention of America and the world at large via sex, sin and surrealism, only then to succumb to scandal and misfortune. Described as “a modern day portrait of the artist,” it will blend music and CGI sequences to capture the surreal nature of its colorful subject. *The Internet Movie Database (IMDb.com)* lists it as “in pre-production” and slated for release in 2010/11 with principal shooting scheduled “to begin early in 2009.”

Another suitably star-powered vehicle is *Dali & I: The Surreal Story*, a project boasting Al Pacino attached to play Dali. It is based on art dealer Stan Lauryssens’ encounters with Dali from the 1960s-80s. *The Internet Movie Database* lists this project as “still in development” and tentatively slated for release sometime in 2011.



Pacino

But *Dali & I: The Surreal Story* is absent from the *IMDb.com* roster of Al Pacino’s “rumored, in development, pre-production, or in production” credits. It is similarly absent from the in development credits of Academy Award nominated screenwriter and director Andrew Niccol, who rewrote the script and is purportedly attached to direct the picture. Same situation with supposed co-star Cillian Murphy, who was to portray Lauryssens. Hmmm. Now ain’t that peculiar?...

According to his *Wikipedia.org* listing, Lauryssens “is known to have written fake interviews with Hollywood stars for *Panorama* magazine and has been in jail in Belgium and Spain for fraud and selling faked Salvador Dalí works of art.” Rumor is that Lauryssens’ ignoble resume, coupled with some outlandish and seemingly libelous claims he made about Dali in his autobiography, on which the movie script is based, have alienate dignitaries in the Dali art world -- people with enough clout to get the plug yanked on this project. 

“War had transformed men into savages. Their sensibilities became degraded. One could see only things that were terribly enlarged. After a long diet of nitro-glycerine, everything that did not explode went unperceived.”



## New Dali Museum Breaks Ground

Excerpted from *The St. Petersburg Times*, December 12, 2008, by Lennie Bennett



Architectural rendering of the new Salvador Dali Museum

The future home of the Salvador Dali Museum is a blank canvas, a smooth greensward adjacent to the Mahaffey Theater on the downtown (St. Petersburg, Fla.) waterfront. But now it will bear the beginning marks of creation, following a ground-breaking ceremony in much the same way the Spanish surrealist lived and worked: ceremonial flourishes, grand gestures -- and, in time, true creativity.

(continued on pg. 6)

THE **Salvador Dali**  
COLLECTORS QUARTERLY

VOL 19 NO 1  
Spring 2009

3

## Explore *The Dali Universe* in London...

# The Dali Universe

Melting clocks, Mae West's lips and a twenty foot high Space Elephant are just a few of the extraordinary works of art on display at *The Dali Universe*. Enter the genial mind of the greatest surrealist, self-publicist and creative genius of the 20th Century, Salvador Dali, in this stunning, permanent 30,000 sq. ft. retrospective located on London's South Bank.

Featuring over 500 works of art, most of which have never previously been exhibited in the UK, *The Dali Universe* showcases extensive collections of his sculptures, rare graphics, jewellery, gold and glass objects, etchings and watercolours. The exhibition also features Dali's vast 11metre-wide mesmerising oil painting *Spellbound* created for the set of Hitchcock's 1945 Hollywood movie.

*The Dali Universe* offers three themed areas:

- **Sensuality and Feminity** includes the world-renowned *Mae West Lips Sofa* and the famous sculpture *Buste de Femme Retrospectif*, which remains one of the defining classics of Surrealism from the 1930's. Graphics illustrating the major themes of literature are also featured, including ten rare lithographs from the *Romeo and Juliet* series and twelve erotic *Casanova* images.

- **Religion and Mythology** reflects Salvador Dali's tempestuous and ambiguous relationship with the Church. Two of Dali's most famous masterpieces -- his epic illustrations of the Bible and of Dante's *Divine Comedy* -- number well over 100 graphics in this area.

- **Dreams and Fantasy** explores Dali's enduring fascination with the subconscious as the true canvas for expression of personality. It comes into vivid focus via his sculptural works such as *The Persistence of Memory* and *The Profile of Time*. Other works that refer to a life lived through dreams include the enchanting *Alice in Wonderland* and *Don Quichotte*.



"For it is well known and recognized that the painter who reflects is always a bad painter, and I dare say also that the same is true for the philosopher who reflects too much -- of whom the prototype is that lamentable 'Thinker' by Rodin."



## ...Experience *Espace Dali* in Paris

More than 600 square metres dedicated entirely to the master of Surrealism! *The Espace Dali* is the only permanent totally Dali exhibition in France, with particular emphasis on the artist's sculptures and engravings. Visitors will discover more than 300 masterpieces that made Dali one of the 20th century's greatest artistic geniuses.

Young and old alike will be amazed by works such as *Space Elephant*, the famous *Soft Watches*, *Alice in Wonderland*, *Romeo and Juliet* as well as the famous *Mae West Lips Sofa*.

- **The largest collection in France of Dali's original sculptures...**

Dali's creative genius transforms into three-dimensional sculpture, manifesting his most famous and fantastic surrealistic images. The passion to express himself sculpturally lasted throughout his lifetime and each sculpture unfolds a Dalinian philosophy.

This superb collection brings to light the Catalan Master's imagination and exhibits a little emphasized aspect of Salvador Dali's work.



THE **Salvador Dali**  
COLLECTORS QUARTERLY.

VOL 19 NO 1  
Spring 2009

4



• Dalí's complete collection of rare original hand signed etchings...

Illustrating the major themes of universal literature, mythology, history and religion. Salvador Dalí was inspired to create a vast repertoire of personalities, allegories and unique images.

Dalí undertook the enormous task of illustrating worldly and other-worldly themes in his own expressly Surrealistic style. This facet of the artist's genius is unparalleled by any other artist of the 20th century.

Located in the heart of Montmartre, our two galleries invite visitors to discover the greatest artists of recent years.

"The Galerie Dalí" presents a unique collection of limited edition sculptures, engravings and lithographs signed by Dalí.

In "The Galerie Montmartre," artwork by Picasso, Dalí and Chagall are displayed in an elegant space overlooking one of the most beautiful cityscapes in central Paris.

Located in Montmartre by the Place du Tertre  
Espace Dalí - 11, Rue Poulbot - 75018 Paris - tel: +33 (0)1 42 64 40 10  
[www.DaliParis.com](http://www.DaliParis.com)



## Dalí Collection Finds a Home in Berlin

Excerpted from *ArtDaily.org* and *ArtInfo.com*

What began as a temporary exhibition of the work of Salvador Dalí in Berlin has resulted in a new museum in the German capital. The classic melting clocks created by the Surrealist genius now have a permanent home in prestigious, centrally located Potsdamer Platz, allowing visitors a peek into the Catalanian universe.

The new Dalí-Museum, also called "Dalí -- Die Ausstellung" or "Dalí -- The Exhibition," opened in early February and will feature a rotating exhibition of more than 400 objects related to the Spanish Surrealist, including drawings, illustrated books, documents, graphics, notebooks, sculptures, and the Surrealist films made by Dalí and Luis Buñuel. The objects come from a cache of some 3,000 objects in private collections.

The exhibition began as a temporary show in the Dom Aquarée in Berlin's Mitte district in 2006 and was moved in 2007 to the popular shopping and cultural Kurfürstendamm area. The show was to close for good at the end of 2008, but according to curator Carsten Kollmeier, visitor numbers and feedback were so great that he decided to open the museum. He expects 100,000 visitors a year.

A white piano suspended over a water feature welcomes visitors to the Dalí-Museum, which is now celebrating the twentieth anniversary of the artist's death. At an opening press conference, Kollmeier said that it was a "dream" to have a permanent location in the center of the city for the collection, which he has been working on bringing together for 10 years. The Dalí objects currently on exhibit are displayed over two floors of the museum.

"The truth is that there never was any relationship between Dalí and Berlin," Kollmeier noted.

Dalí's ability to captivate the masses was, according to Kollmeier, another of his artistic talents which, combined with some of his "more commercial and profane" works of art, helped introduced him into an exclusive artists' club, considered "stars" of their time.



Dalí-Museum, Berlin



THE **Salvador Dalí**  
COLLECTORS QUARTERLY

VOL 19 NO 1  
Spring 2009

5





## Exhibit Includes Dali Chess Set

Excerpted from *The Detroit News*, January 9, 2009 by Michael H. Hodges

If you think an exhibition of exotic chess sets is a snore, you really ought to check out *Master Pieces: Chess Sets from the Dr. George & Vivian Dean Collection* before it closes at the Detroit Institute of Arts May 17. Some of the modern artists whose creations are featured in the colorful collection include Man Ray and Salvador Dalí.

Take a peek at Salvador Dalí's gift to the Dadaist artist Marcel Duchamp, who was famously nuts about chess. All the gilded pieces in Dalí's wacky 1966 *Homage to Caissa* set are fingers -- the pawns are thumbs, the kings and queens long, slender index fingers sporting crowns.

Bending down to examine the Dalí set, Gary Griffin, a self-described chess enthusiast from Rochester Hills, shakes his head and grins. "Now that rates high on the bizarre scale."



Viewed from beneath through glass, Duchamp and Dalí duel at chess.

*"Gala would often reproach me for putting such great effort into the execution of insignificant and miserably remunerated orders. I would answer that in as much as I was a genius it was a veritable miracle that I got any orders at all."*

## Museum Breaks Ground (continued from p. 3)

The design by Tampa-based architect Yann Weymouth of the international firm HOK has to serve two practical imperatives: display the collection, the most comprehensive in the world, to best advantage; and protect it from the ravages of a possible storm, up to a Category 5 hurricane, with 18-inch concrete walls.

Of all of his museum design projects, the \$35-million, 66,450-square-foot Dalí Museum probably shows best Weymouth's gift for incorporating glass creatively into a design.

"What I love about this building is its duality," he says. "It's like a Dalí painting. There's a moment when you look at one and you see a scene you understand. Then you look more closely and something begins to play with your perceptions. That duality -- the logical, Euclidian box with the flowing glass -- is an abstraction of the way Dalí painted."

He uses such allusions to Dalí's ideas and images without re-creating them literally as Dalí himself did at the museum he built in Figueres, Spain, to house the other great collection of his work. There, for example, giant eggs line the roof and an enormous geodesic dome designed by his friend Buckminster Fuller, the visionary architect, dominates the landscape.

"There are no literal references to Dalí here," Weymouth says. "The glass is a geodesic structure but not a 1950s one - it's for the 21st century. It began as a functional design to provide more space for the store. We used computers to shape it, the way the forces of physics move things. It's like a water droplet in motion."

The building's "rigorous functionality" is a special point of pride for him. In the galleries, every internal wall is moveable and the lighting system is the finest available so art can be arranged in any configuration. The gallery containing the museum's seven monumental Dalí paintings will be different. Each work will be washed in a separate pool of natural light from windows strategically placed and glazed with strong UV-protected glass.

"A cloud will go over the sun," Weymouth says, "and the painting will change as you look at it."

Those revelations won't be enjoyed until the museum opens, projected for late 2010 or early 2011. The construction budget is \$9-million short of its goal. But museum leaders are going forward, convinced of the need for a larger, safer facility and confident the public will support it.



THE  
**Salvador Dalí**  
COLLECTORS QUARTERLY.

VOL 19 NO 1  
Spring 2009

6

# Events & Exhibitions

## 9th Jameson Belfast Film Festival Movie House, Dublin Road - Belfast, Ireland

*Little Ashes* -- 7:30 p.m., March 26, 2009

The Irish premiere of *Little Ashes*, a film which chronicles the life of a young Salvador Dali, opens the 9th Jameson Belfast Film Festival (see front page, this issue of *The SDCQ*). Full information and tickets available through the Official Programme, [www.BelfastFilmFestival.org](http://www.BelfastFilmFestival.org). Or phone the Festival Box Office on 02890 246609.

## Tacoma Art Museum 1701 Pacific Avenue - Tacoma, Washington

*The Surrealist Impulse* -- Through May 10, 2009

Exhibit explores surrealism in modern and contemporary art. Includes glass, video, jewelry, ceramics, prints & paintings from 1936 to present by such artists as Gloria Bornstein, Scott Fife, Claudia Fitch, Joseph Goldberg, Anya Kivarkis, Mary Ann Peters and Karen Willenbrink-Johnsen. A highlight of the exhibit is *The Song of Songs of King Solomon* from 1971 by Salvador Dali, a portfolio of twelve prints illustrating passages from a book of the Old Testament and one of Dali's most sought-after series. Info at [www.TacomaArtMuseum.org](http://www.TacomaArtMuseum.org) or phone (253) 272-4258.


## Cincinnati Art Museum 953 Eden Park Drive - Cincinnati, Ohio

*Surrealism and Beyond* -- Through May 17, 2009

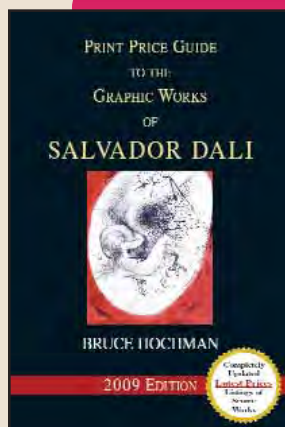
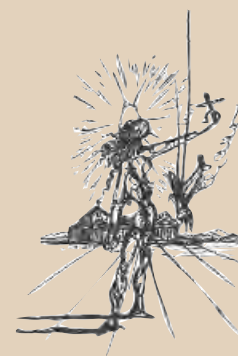
Survey of Dada and Surrealism movements, selected from the Vera & Arturo Schwarz Collection of Dada and Surrealist Art from the Israel Museum, Jerusalem -- exclusive U. S. showing. 200+ works, various media, including Salvador Dalí, Marcel Duchamp, Max Ernst, René Magritte, Joan Miró, Pablo Picasso & Man Ray. Info at [www.CincinnatiArtMuseum.org](http://www.CincinnatiArtMuseum.org) or phone (513) 639-2995.

## Detroit Institute of Arts 5200 Woodward Avenue - Detroit, Michigan

*Master Pieces: Chess Sets* -- Through May 17, 2009

Including Dali's *Homage to Caissa* chess set (see story page 6, this issue of *The SDCQ*). Info at [www.dia.org](http://www.dia.org) or telephone (313) 833-7900. 

*"And what is heaven?  
Where is it to be  
found? Heaven is not  
to be found neither  
above nor below,  
neither to the right nor  
to the left, heaven is to  
be found exactly in the  
center of the bosom of  
the man who has  
faith!"*



Order the 2009 Salvador Dali Print Price Guide

Only \$69.95 (+\$9.95 S&H-U.S.) (Call for S&H outside U.S.)

Call 1-800-275-3254

Outside U.S. 949-373-2440 · U.K. only 0800-883-0585

All orders final - no returns. Order securely online at:

[www.DaliGallery.com](http://www.DaliGallery.com)

  
THE  
salvador Dali  
COLLECTORS QUARTERLY.

VOL 19 NO 1  
Spring 2009

7

# AUCTION NEWS



**Femme en Flame (pictured top left)**  
Bronze sculpture, 1980  
Estimated : \$92,610 - \$121,100  
Sold: \$155,650 at Sotheby's London  
February 4, 2009

**La Source**  
Watercolor, pen & ink and pencil on paper, 1950  
Estimated: \$21,370 - \$35,620  
Sold: \$46,230 at Sotheby's London  
February 4, 2009



**Surrealist Landscape (pictured top right)**  
Pen & ink and graphite on paper  
Signed lower left, circa 1931-32  
Estimated: \$6,000 - \$8,000  
Sold: \$36,000 at Bloomsbury Auctions New York  
March 4, 2009



**Deux figures surréalistes**  
Pen & ink and pencil on paper  
Signed lower right, 1927-28  
Estimated: \$14,000 - \$18,000  
Sold: \$20,000 at Christie's New York  
February 11, 2009



**Vénus à la girafe (pictured bottom left)**  
White painted bronze, 1973  
Estimated: \$58,470 - \$87,710  
Sold: \$107,080 at Christie's London  
February 5, 2009

**Study for Bacchanal (pictured middle right)**  
Pen, brush and India ink on paper, circa 1937-38  
Estimated: \$36,550 - \$43,850  
Sold: \$47,440 at Christie's London  
February 5, 2009



**Spellbound Rooftop (pictured bottom right)**  
Watercolor, wash, brush and black ink on paper  
Signed and dated, 1944  
Estimated: \$29,240 - \$43,850  
Sold: \$45,680 at Christie's London  
February 5, 2009

## THE SALVADOR DALI COLLECTORS QUARTERLY

© 2009 The Salvador Dali Gallery, Inc.

Published quarterly (March, June, September, December) by The Salvador Dali Gallery, Inc., 31103 Rancho Viejo Road, #2-193, San Juan Capistrano, California 92675. Toll free 800-ASK-DALI (800-275-3254). The Salvador Dali Gallery, Inc. is a complete Dali resource, exclusively offering Albert Field's Official Catalog of the Graphic Works of Salvador Dali; Bruce Hochman's Annual Print Price Guide to the Graphic Works of Salvador Dali; authentic Dali prints and originals, and this publication. Visit The Salvador Dali Gallery's website: [www.DaliGallery.com](http://www.DaliGallery.com).